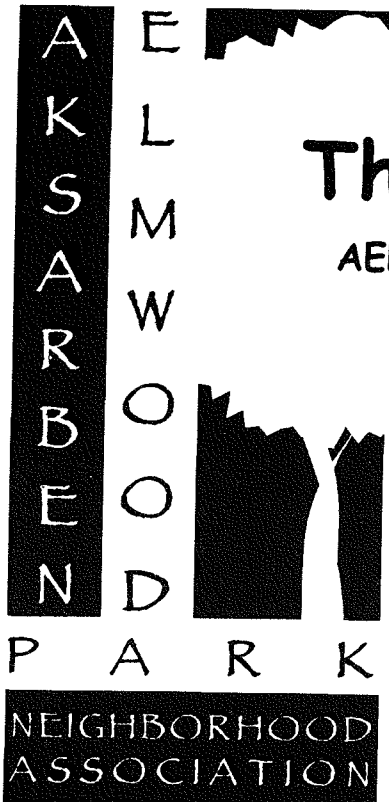


September 2006



The Park Bench

AEPNA Association Newsletter

Next Meeting... September 21st

President's Message

The September meeting will be the last meeting before elections for neighborhood association officers in November. The association needs people who are willing to offer leadership, and I encourage anyone interested in any of the officer positions to make their availability known. The association will need to make sure new leaders are encouraged and developed so the association remains strong.

I would like to thank Heather Scheiding for her service as vice president the last two years. Heather was responsible for lining up speakers and helped out with the picnic in July. Heather and her husband Kevin have moved to Sarpy County. I'm sure we all wish them well.

As a result of the discussion of traffic issues at the July meeting, the OPD traffic division will be focusing attention on 57th St. between Pacific and Leavenworth and on Woolworth St. between 60th and 63rd Sts. during September. We just missed the deadline for choosing areas to focus on in August, but this will be done in September, according to Warren Weaver, the assistant to the City Council. Councilman Jim Suttle, who attended our July meeting, was instrumental in getting this done.

A Youth Art Contest is being held to benefit the Neighborhood Center of Greater Omaha. Entrants must be between the ages of 8 and 18. Winners and runners-up will have their artwork auctioned at the Neighborhood Center's Youth Art Event on January 25, 2007. Proceeds will go to the Neighborhood Center. Entries must be received by November 15, 2006. Call the Neighborhood Center at 561-7582 for more information. There will also be information available at our September meeting.

As noted in last month's newsletter, the September meeting will be a candidate forum for candidates for local office in the general election on Nov. 7. Candidates will have 5 minutes to speak, or they can divide the time between speaking and answering questions. We had a good turnout of candidates for the spring forum, and I think we can expect a similar turnout this fall, although there will be fewer since the primary narrowed the field.

I look forward to seeing everyone in September with some good questions for the candidates.

Tim Potter

Next meeting is Thursday
September 21st

6:30 Social

7:00 Meeting

Topic: Candidate Forum
Saint Matthew Evangelical
Lutheran Church
1725 S 60th St
Bring a friend or two!

Meeting Schedule...
3rd Thursday
Every Other Month

We Welcome Our New Members

Clooty Tree Massage
Jean Bellinghausen
Jay Leighter & Julie Wasser

**AkSarBen- Elmwood Park
Neighborhood
Association**

Executive

President - Tim Potter
553-7007

V-President- Heather Scheiding
561-0477

Secretary - Larry Jaynes
553-5790

Treasurer - Eileen Slane
553-5988

Committees:

Membership/Bylaws
Scott Swanson

**Community Service and
Beautification**
Open

Social Activities
Nicole O'Brien,
333-6214

Neighborhood Watch
Danielle Nolte 216-6583

Webmaster- Lara Turco
lara@noirdesign.com

Zoning and Code Enforcement
Terese Koubsky 558-4994

Newsletter

Publisher, Ellen Shurson
551-6787

Shurson@msn.com

Distribution
Melissa Prohaska

Visit us online at
www.aksarbenelmwood.org

Get Involved:

Interested in getting involved in
your neighborhood and playing
a part in Improvement efforts?

Here is your chance.
Contact Tim Potter
at 553-7007

Neighborhood Scan

As of August 29th, neighborhood volunteers have completed walking surveys of over three hundred thirty properties in our association boundaries as part of the Omaha Neighborhood Scan. The Omaha Neighborhood Scan is a partnership between the City of Omaha and the University of Nebraska at Omaha's School of Public Administration. The goal of the program is to identify, monitor, and correct conditions within the neighborhood that affect or have the potential to affect the safety, health, or quality of life in the area.

The initial survey took nearly six weeks, due perhaps in part to the record-setting temperatures this summer followed by what seemed like weeks of rain, and of course summer vacation schedules. Property owners in the areas already surveyed will receive informational letters from the neighborhood association beginning in September. We will continue surveying properties in mid September. Many other Omaha neighborhood associations are participating in this program, including the Joslyn Castle and Gifford Park neighborhood associations. Some neighborhood associations have used the data obtained to apply for grants to address specific problems within their neighborhoods such as sidewalk safety.

I encourage residents to learn more about this program and consider volunteering. If you would like to volunteer please contact me. The time commitment per volunteer is only about two hours on average, and UNO provides the equipment. Volunteers will not be asked to survey areas that include their own homes. There is a website with more information available at www.unomaha.edu/neighborhood. If you do not have internet access I would be happy to meet with you.

Ferese Koubsky
558-4994

teresekoubsky@hotmail.com

Thank You

We thank Melissa Prohaska for not only volunteering to distribute the newsletter to business distribution sites, but for collating and labeling the newsletters for mailing.

The Aksarben Elmwood Park Association Newsletter is published monthly by Shurson Publishing. Direct all advertising inquires to 551-6787. Send all articles for submission and press releases to Shurson Publishing, P.O. Box 31485, Omaha, NE 68131, e-mail to Shurson@msn.com to arrive by the 1st of the month of publication. Content may be edited for clarity and space considerations. No warranties of the products or services printed herein are expressed or implied by either the Association or Shurson Publishing.

Protecting yourself and your family

Make sure you are aware of any sex offenders in the neighborhood. It is always important to develop constructive plans to prepare yourself and your family against any potential harm. The registry can be accessed at <http://www.nsp.state.ne.us/sor/>

Sex offender registry information shall not be used to retaliate against the registrants, their families, or their employers in any way.

Vandalism, verbal or written threats of harm are illegal and will result in arrest and prosecution.

Please Tell Our
advertisers you
saw their ad
in this
Newsletter.
Support Midtown
Businesses!

Neighborhood Items

By Scott Swanson

Neighborhood Watch

For more information on the neighborhood watch program, contact Danielle at 402.216.6583.

Association – Get Involved

Don't just sit on the sidelines, if you have an interest in getting involved in your neighborhood and having a part in what happens in the association contact Tim Potter at 402.553.7007.

UNO Noise/Trash

Having problems with noise, parties and trash from the UNO dorms, contact Bill Swanson at 402.554.2612, email is wswanson@mail.unomaha.edu to make a report. Document as much as you can and take pictures if you are able too. Details will help pin point the problem.

Willa Cather Branch

44th and Center Street

444-4851

www.omaha.lib.ne.us

Library Hours:

Mon, Wed, 12:00 - 8 pm
Thursday & Sat 10 am - 6 pm
Closed Friday & Sunday

Serving Lunch

Monday thru Friday
11AM - 2 PM



Phone : 614-3235

Fax: 614-3192

5423 Leavenworth

Brunch Sunday

9 AM - 2 PM

Catering & Private Parties

on or off site

Cooking Classes
the Last Wednesday
of the Month

* Private Cooking

Classes also
available



AEPNA Membership Form

New ___ Renewal ___

Name: _____

Address: _____ zip _____

Home Phone: _____

Email Address: _____

Circle one: single Household Business
 \$5.00 \$10.00 \$35.00

Please make check payable to:

Aksarben Elmwood Park Neighborhood Association

Mail to: 1302 South 56th Street Omaha, NE 68106

AEPNA CLASSIFIED /WANT ADS

Gingerbread House Classes

With international award winning sugar artist Jo Ellen Simon. All supplies provided for 2, 3 hour sessions \$90 Nov 4 & 5 or 18 & 19 1:00 - 4:00 or Nov 12 & 13 7:00 - 10:00
551-9776

Denny's Handyman Service

Carpet Laying & Restretch
Painting & Home Repairs
397-4223 Area References

**To Advertise Here
Call 551-6787**

Advertising Rates: \$5 for three lines plus \$1 for each additional line. 25 characters per line, count all spaces & punctuation. Submissions will be edited to fit contracted space.
Send ad text and check to Shurson Publishing, P.O. Box 31485, 68131. Call 551-6787.

Save Gas....
Shop Midtown
We Have it All!

Be Part of the Solution ...
Support Your Neighborhood
Join Us Today

Area Houses Sold

Address	Sold price	Beds/Baths	sq. ft	Date sold
6021 William St	\$133,000	3/1	1335	8/16
5715 Pacific St	\$ 135,000	3/1	1604	8/10
5815 Mason St	\$150,000	3/2	1476	8/03
5703 Pacific St	\$155,000	2/2	1775	8/18
5911 Pierce St	\$156,000	3/2	1844	8/31
956 S. 58 St	\$180,000	3/2	2178	8/31
5501 Leavenworth	\$165,000	3/2	1779	7/28
6220 Pierce St	\$168,500	3/2	2049	7/06

Raquel 

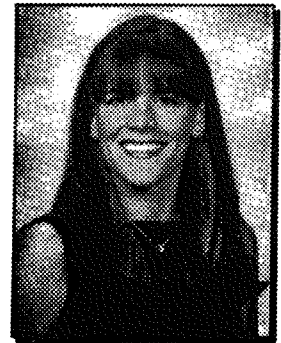
*Referrals are
always welcome!*

AHLVERS

MBL: (402) 301-7653
OFC: (402) 498-8300 • FAX: (402) 964-4801
EMAIL: raquel.ahivers@cbshome.com
WEB: raquelahivers.cbshome.com

CBSHOME
REAL ESTATE

13110 W Dodge Rd. • Omaha, NE 68154



**TO ADVERTISE
CALL ELLEN SHURSON
551-6787**

A
K
S
A
W
B
O
R
D
P
A
R
K
N
E
I
G
H
B
O
R
H
O
O
D
A
S
S
O
C
I
A
T
I
O
N

P.O. Box 6665
Omaha, NE 68106

PRSRST STD
US Postage
PAID
Omaha, NE
Permit 1638